



# Universal Clinching Press

## Cost-Effective Sheet Metal Joining

*Ideal for prototypes & small production runs*

- 80 PSI air
- 3" or 4.5" stroke
- 18" Throat
- Welded frame
- Foot valve operation
- Standard **Tog-L-Loc**<sup>®</sup> tooling
- More options available



Contact us to learn more!

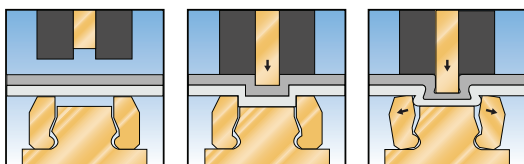
[sales@btmcorp.com](mailto:sales@btmcorp.com)



or call  
**810-364-4567**

## Tog-L-Loc<sup>®</sup>

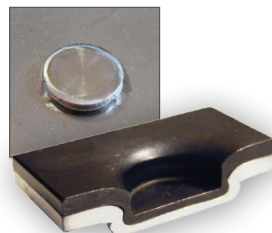
Sheet Metal Joining System



Clamps

Draws

Locks



- Reliable, proven clinching
- No fasteners or welding
- Cold-Formed- No sparks, fumes, or discoloration
- Vibration-Resistant & Leak-proof