



NEW MCP-5 Manual Drive Press

Cost-Effective Sheet Metal Clinching

- 80 PSI air
- 4" stroke
- 6" Throat
- Steel frame
- Safely advance the press by hand
- Optimized for **Tog-L-Loc**[®] clinching
- Multiple configurations

Learn more online!

www.btmcomp.com/manual-drive-cylinder-presses.html

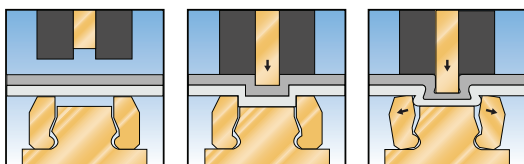


or call
810-364-4567



Tog-L-Loc[®]

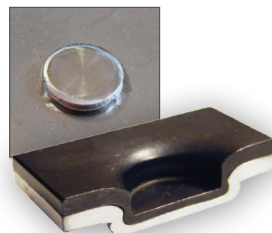
Sheet Metal Joining System



Clamps

Draws

Locks



- Reliable, proven clinching
- No fasteners or welding
- Cold-Formed- No sparks, fumes, or discoloration
- Vibration-Resistant & Leak-proof