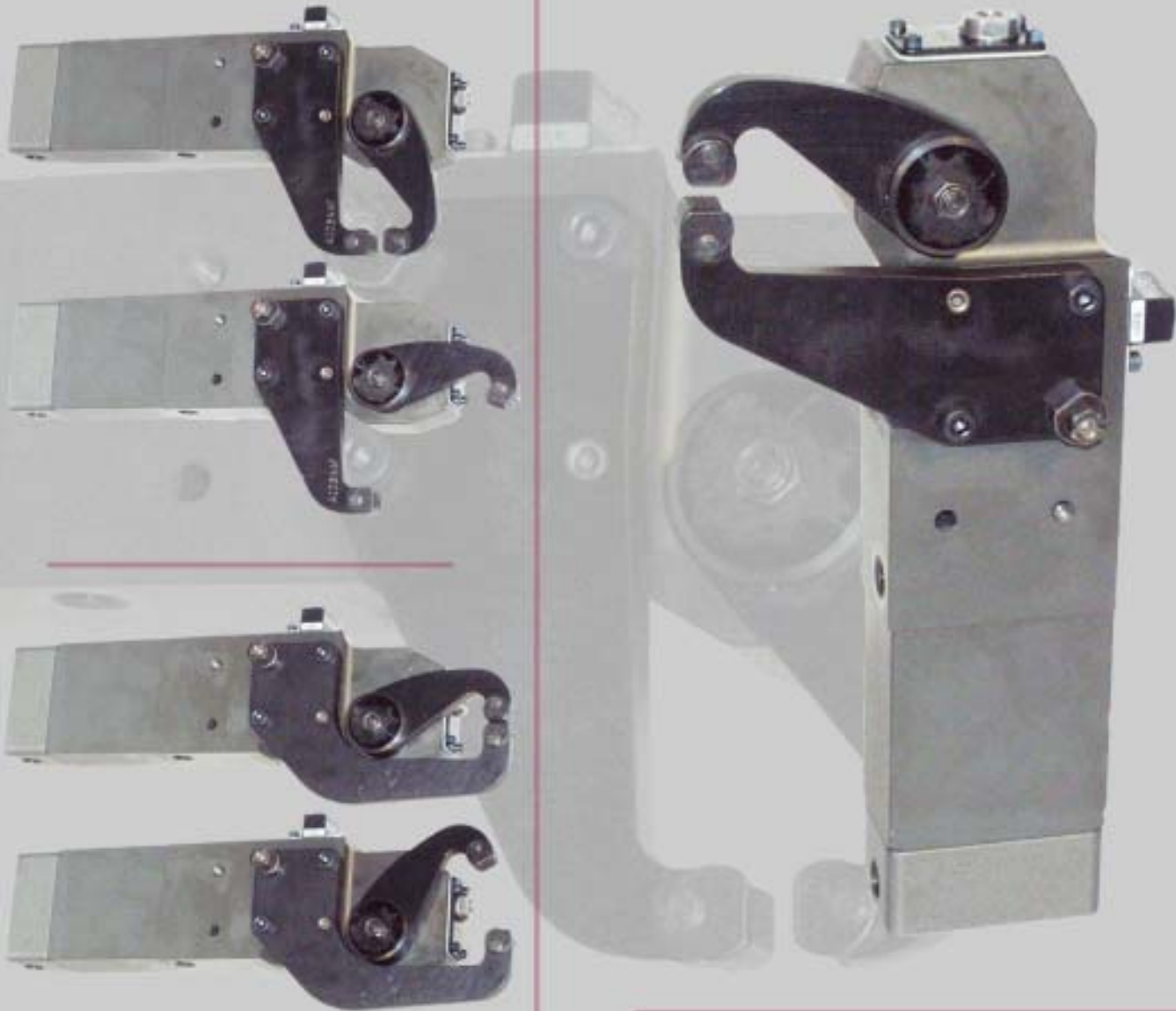


Sealed Heavy Duty Grippers



STANDARD PADS



CUSTOM PADS AVAILABLE

BTM
CORPORATION

Sealed Heavy Duty Gripper SHDG 52 Series

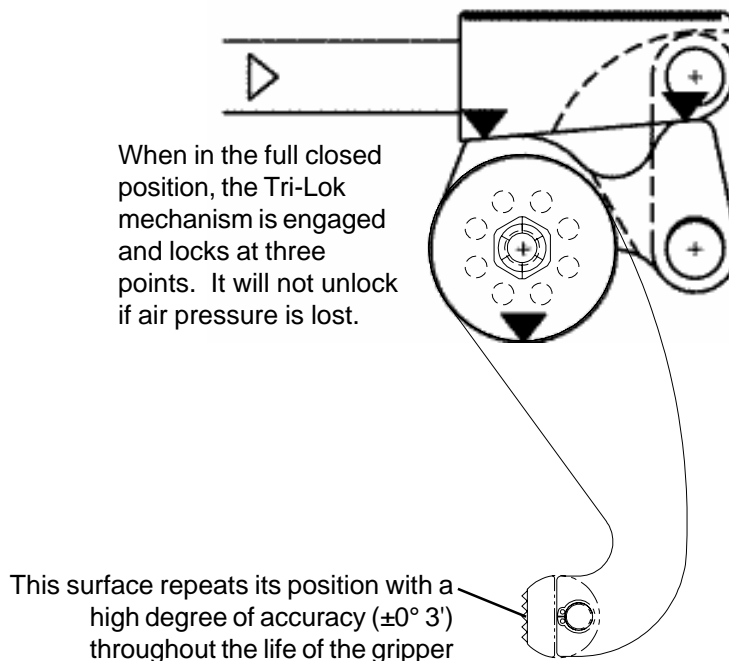
BTM
CORPORATION

FEATURES

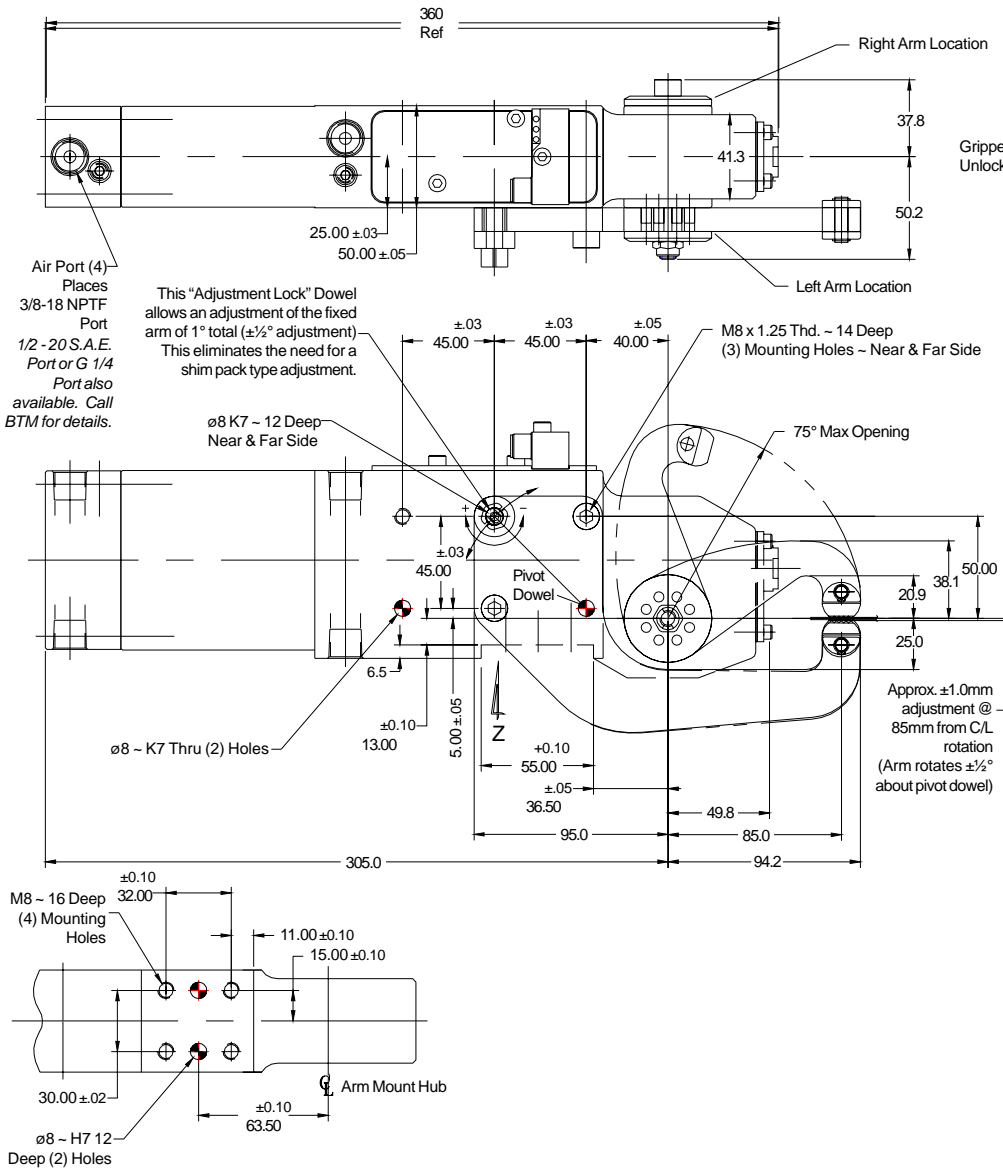
- Sealed mechanism ~ Lubricated for life of gripper
- Gripper mechanism is impervious to weld contamination
- TRI-LOK mechanism ~ Remains locked if air pressure is lost
- Body style provides NAAMS mounting patterns
- Integral 52mm (2") oval bore cylinder with heavy wall
- Hardcoated aircraft aluminum body for excellent wear characteristics
- Light weight ~ Approximately 4.9 kg. (11 lbs)
- Pin arm drive for versatile arm positioning & Simplified arm change
- Integrated proximity switch package
- Adjustable cushions standard on both advance and retract ends
- Manual Unlock provision for setup



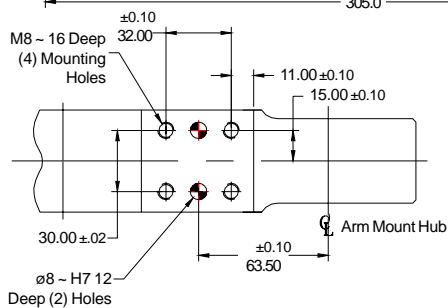
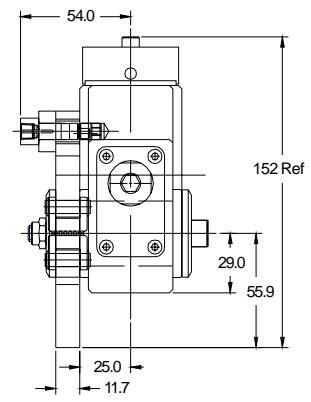
TriLok



CAD TEMPLATES AVAILABLE



Grippers have a Manual Unlock provision for setup.



View Z

Recommended operating pressure:
 5.5 - 7 bars (80 - 100 PSI)
 Compressed air
 Adjustable cylinder cushions are standard.

Gripping Force on Center of Gripper Pads (N) = $\frac{16\,500 \times \text{LINE PRESSURE (Bars)}}{85}$

Gripping Force on Center of Gripper Pads (lbs.) = $\frac{10 \times \text{LINE PRESSURE (P.S.I.)}}{3.35}$

Equivalent Bore Size
 ø52mm [ø2.00 in]

Use flow controls to reduce impact

Manufactured by BTM CORPORATION, Marysville, Michigan USA, PATENTED

GRIPPER ASSEMBLY NUMBERS		
ARM OPENING	CYLINDER STROKE	SINGLE OPENING FIXED
30°	25.99	744500A
45°	33.17	744500B
60°	40.24	744500C
75°	47.63	744500D

HOW TO ORDER

GRIPPER ASSEMBLY NUMBER
 ARM LOCATION: L= LEFT SIDE, R= RIGHT SIDE
 MOVABLE ARM GRIPPER PAD *
 FIXED ARM GRIPPER PAD *
 PROXIMITY SWITCH OPTIONS

Pg. 46 **744500D - L - 728050A - 733201H - SC2**

*Pad numbers may also be called out as 1, 2, 3, 4, etc. See pg. 48 for pads.

SHDG 52 Sealed Heavy Duty Gripper ~ Single Opening Fixed Flange

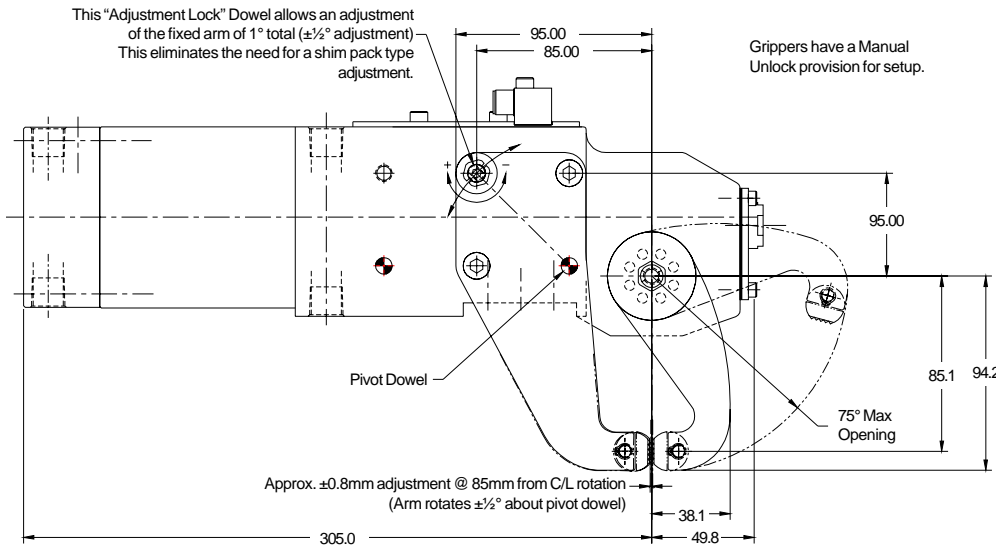
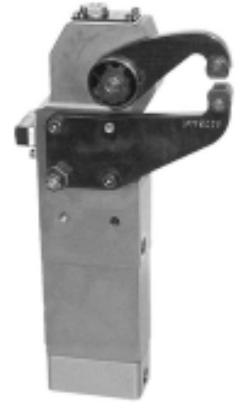
SHDG52



CAD TEMPLATES AVAILABLE

Standard Switch Package Turck Status Controller DC	Switch Package Namco C2000 Sensor	Switch Package Pepperl & Fuchs Status Controller DC	Cylindicator Switch Block	Cover Block No Switch
Ni2-Q6.5-AP6-0.20-FS4.4X3/S304	DC Type 92 EE280-92140 SC2NDC	NBN2-F581-160S6-E8-V1	SP Switches Not Included	NS For Use Without Switches
 AC Ni2-Q6.5-ADZ32-0.16-FSB5.4X4/S304 	 AC Contact BTM for availability	 AC Not Available	 Not Available For 30° Opening	

Other switch brands may be available. Contact BTM for information.



For dimensions not shown on Flange model, see facing page

Recommended operating pressure:
5.5 - 7 bars (80 - 100 PSI)
Compressed air
Adjustable cylinder cushions are standard.

$$\text{Gripping Force on Center of Gripper Pads (N)} = \frac{16\,500 \times \text{LINE PRESSURE (Bars)}}{85}$$

$$\text{Gripping Force on Center of Gripper Pads (lbs.)} = \frac{10 \times \text{LINE PRESSURE (P.S.I.)}}{3.35}$$

Equivalent Bore Size
ø52mm [ø2.00 in]

Use flow controls to reduce impact



Manufactured by
BTM CORPORATION
Marysville, Michigan USA
PATENTED

GRIPPER ASSEMBLY NUMBERS

ARM OPENING	CYLINDER STROKE	SINGLE OPENING FIXED FLANGE
30°	25.99	744600A
45°	33.17	744600B
60°	40.24	744600C
75°	47.63	744600D

HOW TO ORDER

GRIPPER ASSEMBLY NUMBER
 ARM LOCATION: L= LEFT SIDE, R= RIGHT SIDE
 MOVABLE ARM GRIPPER PAD*
 FIXED ARM GRIPPER PAD*
 PROXIMITY SWITCH OPTIONS

744600D - L - 728050A - 733201H - SC2

*Pad numbers may also be called out as 1, 2, 3, 4, etc. See pg. 48 for pads.

